



# TANK BROCHURE



Suppliers of equipment by

**DESO**

**DESO is a world class rotational moulding company** specialising in the design and production of liquid storage and dispensing containers. Tanks and bowzers are produced for fuel, chemical and water applications. Uniquely in the UK DESO design and manufacture all moulding machines and tooling in house ensuring the highest technical standards. Our comprehensive range of products are distributed throughout the UK and Europe.

Our products comply with the latest European standards and provide cost effective solutions to domestic, commercial and agricultural storage and dispensing requirements. Bunded tanks have a 10 year guarantee (subject to conditions) and are supplied with moulded-in fittings and o-ring seals for unsurpassed protection against leaks. Manufactured from high grade polyethylene DESO tanks are corrosion resistant, have high impact strength and the latest UV stabilisation packages.

#### Symbols key



Forklift access points



Compatible with latest electrical gauges



Lockable lid



Crane lifting lug



Oil



Available as waste oil well

#### Index

3 - 5	Bunded Tanks
6	Waste Oil Wells
6 - 8	Diesel Dispensers
8 - 9	Single Skin Oil Tanks
10	Ad Blue Tanks
11	Sustainable Water and Energy

## Installation Kit

optional accessories for the DESO oil tank range



#### Top Outlet Kit

The Environment Agency in their Pollution Prevention Guideline PPG2 prefer top outlet tanks and the guidelines specify anti-siphon valve to be installed. Contact us for more information.



**Filter and Isolating Valve**  
(bottom outlet only)



#### Remote Monitoring

Add 'GK' suffix to any oil tank order code to receive the Watchman Sonic & Filter and Isolating Valve.



## bunded tanks



### V1230BT



a 1250mm [4' 1"] b 1555mm [5' 1"]

Capacity: 1230 Litres (270 gallons)

Tank Footprint: 1230mm [4'] dia.

Weight: 92 kgs OFCERT: 0668030707



### V1340BT



a 1410mm [4' 8"] b 1500mm [4' 11"]

Capacity: 1340 Litres (295 gallons)

Tank Footprint: 1390mm [4' 7"] dia.

Weight: 107 kgs OFCERT: 0668060210



### V2455BT



a 1700mm [5' 7"] b 1810mm [5' 11"]

Capacity: 2455 Litres (540 gallons)

Tank Footprint: 1670mm [5' 6"] dia.

Weight: 162 kgs OFCERT: 0668060211



### V3500BT



a 2120mm [7'] b 1600mm [5' 3"]

Capacity: 3500 Litres (770 gallons)

Tank Footprint: 2075mm [6' 10"] dia.

Weight: 198 kgs OFCERT: 0668030707



### V5000BT



a 2120mm [7'] b 2300mm [7' 7"]

Capacity: 5000 Litres (1098 gallons)

Tank Footprint: 2075mm [6' 10"] dia.

Weight: 282 kgs OFCERT: 0668060212

### V9400BT

a 2450mm [8'] b 2800mm [9' 2"]

Capacity: 9400 Litres (2067 gallons)

Tank Footprint: 2450mm [8'] dia.

Weight: 400 kgs

OFCERT: 0668051403



Note lifting eye  
on V9400BT



## bunded tanks

### SL650BT

a 1260mm [4' 1"] b 1350mm [4' 5"]  
c 630mm [2' 1"]

Capacity: 650 Litres [142 gallons]

Tank Footprint: 600mm x 1210mm [2' x 4']

Weight: 90 kgs

OFCERT: RAP120006 EN13341



### SL1000BT

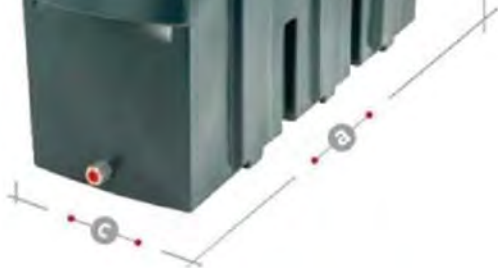
a 1890mm [6' 3"] b 1350mm [4' 5"]  
c 640mm [2' 1"]

Capacity: 1000 Litres [220 gallons]

Tank Footprint: 600mm x 1830mm [2' x 6']

Weight: 115 kgs

OFCERT: 0668061502



### SL1250BT

a 2000mm [6' 6"] b 1660mm [5' 5"] c 650mm [2' 1"]

Capacity: 1250 Litres [275 gallons]

Tank Footprint: 640mm x 1990mm [2' 1" x 6' 6"]

Weight: 132 kgs

OFCERT: 0668051401



### SL1400BT

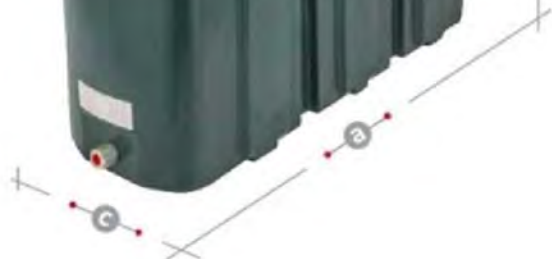
a 2130mm [6' 11"] b 1620mm [5' 3"]  
c 650mm [2' 1"]

Capacity: 1400 Litres [308 gallons]

Tank Footprint: 630mm x 2100mm [2' x 6' 10"]

Weight: 161 kgs

OFCERT: 0668051402





## bunded tanks



### LP1200BT



- a 2000mm (6' 7")
- b 930mm (3' 1/2")
- c 1400mm (4' 7")

Capacity: 1200 Litres (264 gallons)

Tank Footprint:

1230mm x 1890mm (4' 1" x 6' 2")

Weight: 120 kgs

OFCERT: 0668060207



### H1235BT



- a 1970mm (6' 6")
- b 1260mm (4' 2")
- c 1280mm (4' 3")

Capacity: 1235 Litres (271 gallons)

Tank Footprint:

1210mm x 1670mm (5' x 6")

Weight: 135 kgs

OFCERT: 0668030708



### H1550BT



- a 2000mm (6' 7")
- b 1500mm (4' 11")
- c 950mm (3' 1")

Capacity: 1550 Litres (340 gallons)

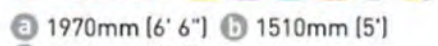
Tank Footprint:

1740x860 (5' 8 1/2" x 2' 10")

Weight: 130 kgs

OFCERT: 0668101701

### H1800BT



- a 1970mm (6' 6")
- b 1510mm (5')
- c 1350mm (4' 5")

Capacity: 1800 Litres (395 gallons)

Tank Footprint:

1190mm x 1720mm (3' 11" x 5' 8")

Weight: 143 kgs OFCERT: 0668030706



### H2500BT



- a 2300mm (7' 5")
- b 1450mm (4' 7")
- c 1250mm (4' 1")

Capacity: 2500 Litres (549 gallons)

Tank Footprint:

1980mm x 1200mm (6' 6" x 3' 11")

Weight: 190kgs

OFCERT: 0668021501




## waste oil wells & spill containers



Lockable easy access lid



**DESO** supply a complete range of waste oil wells (wow) and spill containment products. Our wow's comply with the latest control of pollution regulations and have the benefit of easy access lid and tondish.

Look for the  symbol on our bunded tank range.

## diesel dispensers

**DESO** supply a complete range of diesel dispensing units which comply with the latest control of pollution regulations. Products range from 430 litres to 9400 litres to suit all agricultural and commercial applications.

Dispensing units come in standard "CDD" or "CDDFM".



Water and  
particulate  
filter



The "CDDFM" version will have the mechanical flow meter option so litres dispensed can be monitored. Both models come with 4 meter 3/4" hose as standard, this can be upgraded to 6 meter if required.

All models are available with either 230v or 12v pumps and come with automatic nozzles.



The V9400DD model is supplied as standard with integral flow meter and 6 meter 1" hose, 230v availability only.

Overfill prevention valves, contents gauging and 10 micron water and particulate filter are fitted as standard.



**diesel  
dispensers  
vertical**



**V1340CDD & CDDFM**



**a** 1410mm [4' 8"] **b** 1740mm [5' 9"]  
Capacity: 1300 Litres (285 gallons)  
Tank Footprint: 1390mm [4' 7"] dia.  
Weight: 125 kgs  
OFCERT: 0668060210



**V2350CDD & CDDFM**



**a** 1700mm [5' 7"] **b** 1850mm [6' 1"]  
Capacity: 2300 Litres (505 gallons)  
Tank Footprint: 1670mm [5' 6"] dia.  
Weight: 180 kgs OFCERT: 0668060211



**VLP5000CDDFMHR\***



**a** 2450mm [8'] **b** 1950mm [6' 4"]  
Capacity: 5000 Litres (1098 gallons)  
Tank Footprint: 2450mm [8'] dia.  
Weight: 280 kgs  
\* HR - Hose Reel (Optional Extra)  
OFCERT: 0668061501



**V3500CDD & CDDFM**



**a** 2120mm [7'] **b** 1750mm [5' 9"]  
Capacity: 3450 Litres (758 gallons)  
Tank Footprint: 2120mm [7'] dia.  
Weight: 205 kgs OFCERT: 0668030707



**V9400DD**



**a** 2450mm [8']  
3050mm [10'] including POD  
**b** 2800mm [9' 2"]  
Capacity: 9400 Litres (2067 gallons)  
Tank Footprint: 2450mm [8'] dia.  
+ 400mm x 600mm for POD base  
Weight: 460 kgs  
OFCERT: 0668051403



## diesel dispensers



### H1550CDD & CDDFM



a 2000mm [6' 7"] b 1500mm [4' 11"]  
c 950mm [3' 1"]

Capacity: 1550 Litres [340 gallons]

Tank Footprint: 1740x860 [5' 8½" x 2' 10"]

Weight: 135 kgs

OFCERT: 0668101701

H1550CDD Pump



### H2500CDD & CDDFM



a 2300mm [7' 5"]  
b 1450mm [4' 7"]  
c 1250mm [4' 1"]

Capacity:  
2500 Litres [549 gallons]

Tank Footprint:  
1980mm x 1200mm  
[6' 6" x 3' 11"]

Weight: 190kgs

OFCERT: 0668021501



### T430CDD 12v



a 845mm [2' 10"] b 870mm [2' 11"] c 1156mm [3' 10"]

Capacity: 430 Litres [96 gallons] Weight: 50 kgs

No Flow Meter Option Unbundled

## single skin oil tanks



### V1340T



a 1250mm [4' 1"] b 1280mm [4' 2"]

Capacity: 1340 Litres [294 gallons]

Tank Footprint: 1250mm [4' 1"] dia.

Weight: 40 kgs

OFCERT: 0668060203

### V2455T



a 1510mm [5'] b 1500mm [4' 11"]

Capacity: 2455 Litres [540 gallons]

Tank Footprint: 1510mm [5'] dia.

Weight: 60 kgs OFCERT: 066806020





## single skin oil tanks



### LP1230T

a 1900mm [6' 3"] b 860mm [2' 10"]

c 1240mm [4' 1"]

Capacity: 1230 Litres [270 gallons]

Tank Footprint: 1050mm x 1750mm  
[4' 7" x 5' 9"]

Weight: 55 kgs

OFCERT: 0668060207



### H1235T

a 1770mm [5' 10"] b 1120mm [3' 8"] c 1030mm [3' 5"]

Capacity: 1235 Litres [271 gallons]

Tank Footprint: 925mm x 1440mm [3' x 4' 9"]

Weight: 55 kgs OFCERT: 0668040202



### R1220T

a 2060mm [6' 9"] b 1400mm [4' 7"]

c 660mm [2' 2"]

Capacity: 1220 Litres [268 gallons]

Tank Footprint: 560mm x 1810mm [1' 8" x 5' 9"]

Weight: 70 kgs OFCERT: 0668040201



### H1900T

a 1820mm [6'] b 1340mm [4' 5"] c 1240mm [4' 1"]

Capacity: 1900 Litres [417 gallons]

Tank Footprint: 965mm x 1555mm [3' 2" x 5' 1"]

Weight: 65 kgs OFCERT: 0668060208



### H2500T

a 2400mm [7' 11"] b 1320mm [4' 4"] c 1250mm [4' 1"]

Capacity: 2500 Litres [550 gallons]

Tank Footprint: 1160mm x 1940mm [3' 10" x 6' 5"]

Weight: 95 kgs OFCERT: 0668060209

## ad blue tanks

**DESO** manufacture Ad Blue dispensing units which come complete with the following as standard:  
Stainless steel Todo connector, hose, nozzle and flow meter.



### V1340 Ad Blue

**a** 1410mm [4' 8"] **b** 1740mm [5' 9"]  
Capacity: 1300 Litres (285 gallons)  
Tank Footprint: 1390mm [4' 7"] dia.  
Weight: 125 kgs



### V2350 Ad Blue

**a** 1700mm [5' 7"]  
**b** 1850mm [6' 1"]  
Capacity: 2300 Litres (505 gallons)  
Tank Footprint: 1670mm [5' 6"] dia.  
Weight: 180 kgs



### H2500 Ad Blue

**a** 2300mm [7' 5"] **b** 1450mm [4' 7"]  
**c** 1250mm [4' 1"]  
Capacity: 2500 Litres (549 gallons)  
Tank Footprint: 1980mm x 1200mm [6' 6" x 3' 11"]  
Weight: 190kgs



### V3500 Ad Blue

**a** 2120mm [7'] **b** 1750mm [5' 9"]  
Capacity: 3450 Litres (758 gallons)  
Tank Footprint: 2120mm [7'] dia. Weight: 205 kgs



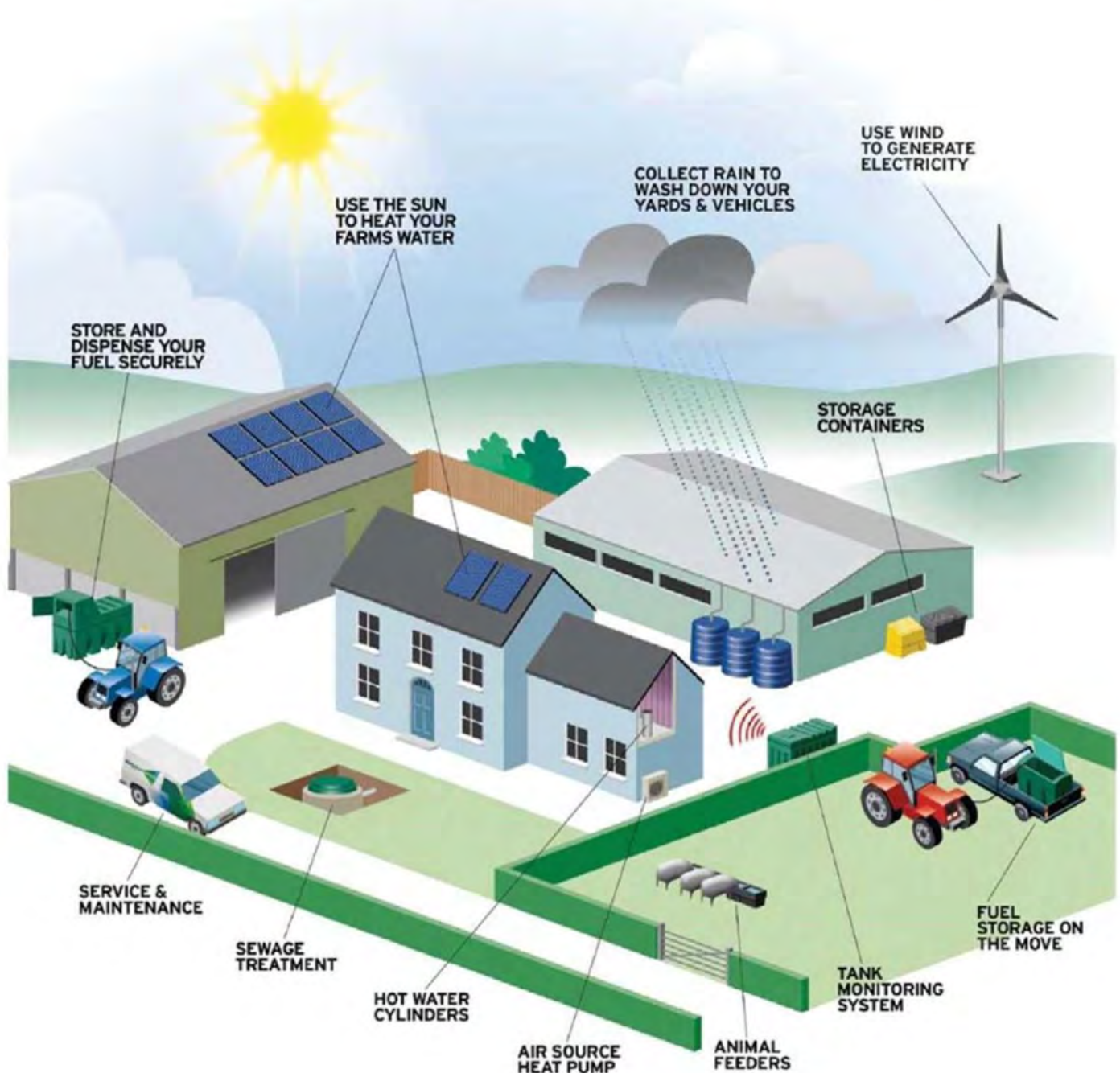
### VLP5000 Ad Blue

**a** 2450mm [8'] **b** 1950mm [6' 4"]  
Capacity: 5000 Litres (1098 gallons)  
Tank Footprint: 2450mm [8'] dia. Weight: 280 kgs



# DESO

## PROVIDING SUSTAINABLE WATER & ENERGY SOLUTIONS



**FORD FUELS**  
suppliers of equipment by  
**DESO** Engineering

**Kingspan**  
Environmental



**Ford Fuels Ltd**

The Oil Depot  
Farrington Gurney  
Bristol  
BS39 6UU

**01761 452222**

[admin@fordfuels.co.uk](mailto:admin@fordfuels.co.uk)

[www.fordfuels.co.uk](http://www.fordfuels.co.uk)

